



Perfect Choice For Tough Jobs!

ADHESIVES



SEALANTS



PU FOAMS



AEROSOLS



WE ARE PLEASED TO
ANNOUNCE A **NEW AND
MORE MODERN EUROFIX**
PACKAGE DESIGN!



CONTENTS

ADHESIVES 5/11

PU Express Montage Kit	5
Acrylic Montage Kit	5
PU Marine Adhesive	6
Express PU Marine Adhesive	6
D2 White Glue	7
Chemical Anchor (Polyester)	7
Super Glue	8
Professional Fast Adhesive	8
PVC Cement Adhesive	9
Granite & Marble Adhesive	9
Waterproof Epoxy	10
Quick Setting Epoxy	10
Steel Epoxy	11
Heavy Duty Wallpaper Adhesive	11

AEROSOLS 25

Foam Cleaner	25
Long-Term Anti-Rust	25

SEALANTS 13/17

Construction PU Sealant	13
Automotive PU Sealant	13
Neutral Silicone Sealant	14
Mirror Adhesive	14
Sanitary Silicone Sealant	15
Aquarium Silicone	15
RTV High-Temp Silicone	16
Universal Silicone Sealant	16
Siliconized Acrylic Sealant	17
Acrylic Sealant	17

PU FOAMS 19/23

PU Adhesive Foam	19
Professional PU Foam	19
Mega Professional Winter PU Foam	20
Safety Valve Reusable Pu Foam	20
Fire Rated Professional PU Foam	21
Fire Rated PU Foam	21
Mega PU Foam 70L	22
Mega PU Foam 65L	22
Polyurethane Foam	23





ADHESIVES

PU Express Montage Adhesive

PROPERTIES

- Fast curing
- Low press time
- Transparent
- Extremely high bond strength on numerous substrates.
- Thixotropic, non-sag, ideal for vertical joints.
- Low consumption, economical
- Good filling properties
- Conforms to D4 according to DIN EN 204
- Easy to use
- Very good resistance to chemicals.
- Excellent resistance to moisture and weather conditions.
- No shrinking
- Low odour
- Useable in slightly wet substrates

APPLICATION

It is suitable for use in construction and repair applications where a permanent strong bond is required between porous-porous and porous-nonporous surfaces. It can be used for bonding to various kinds of construction materials such as wood, MDF, concrete, metal, polystyrene and polyurethane foam, PVC, marble, granite, polycarbonate, glass and ceramic etc.



**NEW
DESIGN**



UE520

Acrylic Montage Adhesive

PROPERTIES

- Acrylic dispersion based
- Good gap-filling capacity on rough surfaces
- Suitable for both indoor and outdoor applications
- Weatherproof
- Over paintable
- Low odour
- Solvent-free

APPLICATION

- Bonding materials such as wood, non-polished stones, concrete, plaster, tiles, panels, synthetic building materials etc.
- Mounting wooden construction elements, wood and plaster panels, plaster ornaments.
- Mounting decorative wooden trimmings
- Repairing cracks in plaster.
- Quick repairs on walls and plaster.



**NEW
DESIGN**

EU520

★ ★ ★ ★ ★
EUROFIX

D4

DIN EN 204



PU Marine Adhesive

PROPERTIES

- Easy application, low viscosity
- High bond strength
- Water resistant (D4-DIN EN204)
- Can be used on slightly humid surfaces
- Resistant to temperature extremes
- Resistant to moisture and chemicals

APPLICATION

- Fixing and gluing wooden elements to other various porous and non-porous elements as wood, metal, concrete, polystyrene foam etc.
- Furniture and boat production.
- All bonding applications that need a high water resistance.



Express PU Marine Adhesive

D4

DIN EN 204

PROPERTIES

- Low press time.
- Transparent.
- Low odour.
- Easy application, low viscosity
- High bond strength
- Fast Curing
- Water resistant (D4-DIN EN204)
- Can be used on slightly humid surfaces
- Resistant to temperature extremes
- Resistant to moisture and chemicals

APPLICATION

- Fixing and gluing wooden elements to other various porous and non-porous elements as wood, metal, concrete, polystyrene foam etc.
- Furniture and boat production.
- All bonding applications that need a high water resistance.



D2 White Glue

PROPERTIES

- High bond strength on numerous substrates
- Water based
- Easy application
- Dries transparent



APPLICATION

Suitable for bonding wood, decorative laminates, chipboard, blockboard etc. which have limited exposure to high humidity



EU590



Chemical Anchor (Polyester)

PROPERTIES

- Suitable for solid and hollow structures.
- High solid content.
- Easy to extrude and to inject.
- Thixotropic, can be applied in vertical and horizontal direction.
- Fast curing.

APPLICATION

- Low to Medium-load applications in solid and hollow supports
- Fixing gates, balustrades, roller blinds, panes, antennas, consoles, cable trays etc.



EU552

Super Glue



PROPERTIES

- Immediate bond
- Very high bond strength after a few seconds.

APPLICATION

- Suitable for glass, rubber, metals, ceramic and many plastics.



Professional Fast Adhesive

PROPERTIES

- Extremely fast bonding.
- High bonding strength.
- Suitable for use on vertical surfaces as it will not drip or slump.
- It is particularly suited to bonding difficult substrates which have a porous or uneven nature since it increases bonding strength by preventing the adhesive to be absorbed by the surface.

APPLICATION

- It is suitable for the bonding of a very wide range of materials, including acidic surfaces and some porous ones, where rapid bonding times are required.
- Suitable for MDF, wood, chip wood, rubber, most plastics, leather and other common substrates.
- Especially suitable for the applications where cure speed needs to be accelerated.
- Although it has a degree of gap filling ability, it is generally recommended for use on close-fitting parts and fairly smooth, even surfaces



EU500

PVC Cement Adhesive

> THF FREE

PROPERTIES

Very high initial forging speed. High resin content gives a good filling capacity in diametrical gaps. Gel consistency and excellent fluidity. High thixotropy index – prevents it from dripping upon application. Acts as a real chemical welding system for PVC, due to its composition. Easy to apply; it does not run or form “tears” inside the fixed pipes. The fixed joints present resistance and ageing characteristics comparable to those of cement PVC. Complies with requirements of the standard BS-EN14680 and BS-EN14814.

APPLICATION

Specifically indicated for:
Bonding cement PVC-U pipes and accessories in pressure systems up to 16 PN according to BS EN 14814 “Adhesives for thermoplastic piping systems for fluids under pressure. Specifications”. Specifically indicated to bond thermoplastic piping systems that conform to BS EN 1452 and BS EN 1329. Bonding pipes and accessories in waste systems according to the following standards:

- PVC-U plastics piping systems for soil and waste discharge (low and high temperature) – BS EN 1329.
- ABS plastics piping systems for soil and waste discharge (low and high temperature) – BS EN 1455.
- PVC-C plastics piping systems for soil and waste discharge (low and high temperature) – BS EN 1566.



Granite & Marble Adhesive

PROPERTIES

- Fast curing (15-30 minutes at 20°C).
- When fully cured it can resist temperatures as low as -20°C
- Easy to process.
- Perfect shine after mechanical polishing.
- High bonding power even in high temperatures.

APPLICATION

- Bonding of natural stones like marble, travertine etc.
- Bonding of concrete, granite, wood surfaces.



* Hardener

Waterproof Epoxy



PROPERTIES

- High lap shear strength and durability,
- Apply and cure under water
- Sets in 20 minutes,
- Cures at room temperature,
- Cures without shrinkage and crack,
- Good gap filling capability,
- Water and chemical resistant,
- Weather and temperature resistant,
- Easy to mix and dispense,
- Paintable and sandable,

APPLICATION

- Bonding for wood, glass, crystal, ceramic, porcelain, metal, fiberglass,
- Repairing furniture and household materials,
- Not recommended for polyethylene, polypropylene, nylon, PTFE or flexible plastics.



Quick Setting Epoxy

PROPERTIES

- High lap shear strength and durability,
- Very fast cure,
- Cures at room temperature,
- Cures without shrinkage and crack,
- Good gap filling capability,
- Water and chemical resistant,
- Weather and temperature resistant,
- Easy to mix and dispense,
- Paintable and sandable.

APPLICATION

- Bonding for wood, glass, crystal, ceramic, porcelain, marble metal, fiberglass, leather, rubber, fabric and rigid plastic substrates,
- Sealing electrical components,
- Repairing furniture and house materials,
- Not recommended for polyethylene, polypropylene, nylon, PTFE or flexible plastics.



Steel Epoxy

PROPERTIES

- High lap shear strength and durability,
- Very fast cure,
- Cures at room temperature,
- Cures without shrinkage and crack,
- Good gap filling capability,
- Machinable,
- Water and chemical resistant,
- Weather and temperature resistant,
- Easy to mix and dispense,
- Paintable and sandable.



APPLICATION

- Bonding surfaces of metal, concrete, wood, glass and ceramic,
- Fixing machinery, appliances, tools, automotive components, pipes,
- Imbedding bolts and screws into metals, concrete or stone,
- Sealing electrical components,
- Not recommended for polyethylene, polypropylene, nylon, PTFE or flexible plastics.



EU535

Heavy Duty Wallpaper Adhesive

PROPERTIES

- Easy to apply.
- Thanks to quick dissolving adhesive, viscosity rise quickly.
- Allows time for positioning.
- Makes future removal quick and easy.
- Dissolves in water with ease.
- Can be cleaned with a sponge and water.
- Contains anti-fungal & bacterial protection.

APPLICATION

- Suitable for hanging most common types of wall coverings including paper backed, vinyl coated, textured, embossed etc.





SEALANTS



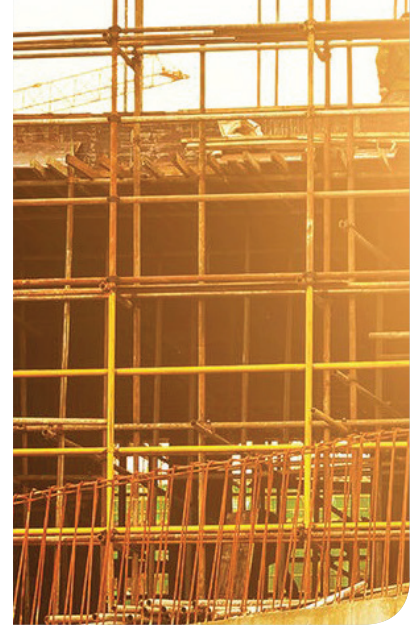
Construction PU Sealant

PROPERTIES

- Possesses permanent elasticity
- No sagging – Thixotropic
- No surface tackiness after full cure.. Do not pick up dirt
- No shrinkage
- Enhanced storage stability
- Can be applied with hand gun and tooled easily
- Paintable
- Cures bubble-free
- 25 % movement capability
- Conforms to the requirements of VOC content specifications in LEED credit EQc4.1 "Low-emitting products" of SCAQMD rule 1168. •Meets the French VOC requirements for class A+

APPLICATION

- Expansion joints between many different construction materials
- Movement and connection joints in floors
- Indoor and outdoor applications for pedestrian and traffic areas
- Joints between prefabricated construction materials
- Sealing and bonding of ventilation ducts, gutters and spouts etc.
- For expansion joints between pre-cast concrete panels
- Meets the requirements of ISO 11600 F 25 LM



EU745



Automotive PU Sealant

PROPERTIES

- Permanently flexible
- Non-sag consistency - Exceptional thixotropy
- Non-sticky / does not pick up dirt
- No change in volume - No shrinkage
- Improved storage stability
- Easy to gun, can be easily smoothed
- Over-paintable
- Conforms to the requirements of VOC content specifications in LEED credit EQc4.1 "Low-emitting products" of SCAQMD rule 1168.
- Meets the French VOC requirements for class A+

APPLICATION

- Body construction of cars, containers, caravans etc.
- Sealing and bonding of ventilation ducts, gutters and spouts etc.
- Sealing of sheet metal seams
- For vibration reduction in all type of sheet metal assembly works
- Sealing against water, air, gas and dust.



EU360



Neutral Silicone Sealant

PROPERTIES

- One component, moisture-cured.
- Excellent primer less adhesion to numerous porous and non-porous substrates.
- Noncorrosive. Does not react with or corrode common building materials.
- Excellent weather ability in direct sunlight, rain, snow and ozone.
- Resistant to temperature extremes (-60 °C to +180 °C).
- Fast curing.
- Low modulus, high elasticity.
- 100% Silicone, solvent less.
- Very low odor.
- Conforms to the requirements of VOC content specifications in LEED credit EQc4.1 "Low-emitting products" of SCAQMD rule 1168.

APPLICATION

- Sealing of connection joints in building industry (brick, wall, concrete, PVC, wood, glass etc.)
- Weather seal applications.
- Mounting of windows and doors.
- Glazing works.
- Sealing applications in kitchens and bathrooms.



NEW DESIGN

Mirror Adhesive



PROPERTIES

- Non-corrosive to mirrors.
- One component, moisture-cured.
- Resistant to temperature extremes (-60 °C to +180 °C)
- Fast curing.
- Highly elastic.
- 100 % Silicone, solventless.
- Very low odor.

APPLICATION

- Bonding mirrors.
- Glazing works.
- Sealing applications where a low odor is required.



NEW DESIGN





Sanitary Silicone Sealant

PROPERTIES

- 100% silicone, does not contain any solvent.
- Cures very fast.
- Mold-Proof.
- No shrinkage
- Stays bright and clean.
- Outstanding resistance to mildew and fungus.
- Resistant to temperature extremes and aging.
- Does not crack or discolor.
- Withstands detergents, cleaning agents and chemicals.
- Acetoxy curing system.
- Conforms to the requirements of VOC content specifications in LEED credit EQc4.1 "Low-emitting products" of SCAQMD rule 1168.

APPLICATION

- Glazing and bonding in shower cabinets during production.
- Filling joints between tiles, tub and shower cabin during installation.
- Filling joints between bath tubs and tiles after production.
- Waterproofing sinks.



EU310

Aquarium Silicone

PROPERTIES

- 100% silicone
- Very good bond and physical strength
- Rapid curing
- Non-toxic to fish after curing
- One component, cures with atmospheric moisture
- Keep its elasticity at low and high temperatures
- Does not crack, discolour or shrink
- Resistant to many chemicals

APPLICATION

- Bonding, sealing and repairing of aquariums
- Construction of glass structures
- On glass/aluminum structures
- Sealing of windows and doors
- Sealing of ventilation, heating and air-conditioning systems
- Glazing on aluminum frames and shop displays





RTV High-Temp Silicone

PROPERTIES

- Excellent heat resistance after curing up to 250 °C permanently and up to 300 °C temporarily.
- Acetoxy cure, RTV silicone.
- 100% silicone.
- Fast cure, high strength.
- Resists to mechanical enforcement after curing.
- Remains flexible at low (-40 °C) and high (+250 °C) temperatures.
- Will not crack, shrink or become brittle.
- One component.
- Conforms to the requirements of VOC content specifications in LEED credit EQc4.1 "Low emitting products" of SCAQMD rule 1168.

APPLICATION

- Sealing and bonding applications in automotive
- On heating systems and ovens for sealing/ tightness
- Sealing and bonding in stoves
- In heating devices
- Gaskets in pumps and motors
- In sealing chimneys
- Other bonding and sealing applications where parts must perform at high temperatures



Universal Silicone Sealant

PROPERTIES

- Stays permanently elastic after curing.
- Acetoxy curing system.
- Excellent adhesion to non-porous surfaces.
- Resistance to aging, cracking and discoloring.
- Resistant to many chemicals, cleaning agents and detergents.
- Can be applied in any season.
- Typical acetic smell during curing.
- Conforms to the requirements of VOC content specifications in LEED credit EQc4.1 "Low emitting products" of SCAQMD rule 1168.

APPLICATION

- General sealing and glazing applications
- Sealing around windows and doors for insulation and gap filling.
- Sealing in DIY applications
- On bathroom, kitchen and plumbing applications.
- Connection and expansion joints on glass, porcelain, steel etc.
- Sealing electric, telephone etc. sockets and switches.



**NEW
DESIGN**



EU350



Siliconized Acrylic Sealant



PROPERTIES

- Can be used on all porous surfaces such as brick, concrete wood etc.
- Very easy to apply and clean
- Water-proof after curing
- Over paintable
- No odour
- Conforms to the requirements of VOC content specifications in LEED credit EQc4.1 "Low-emitting products" of SCAQMD rule 1168.
- Conforms to French A+ indoor air quality requirement.

APPLICATION

- Sealing of low and medium movement joints between various construction materials (wood, concrete, brick etc.)
- Sealing joints between windows, walls, doors etc.
- Filling cracks in walls and on ceilings.



EU200



Acrylic Sealant

PROPERTIES

- Over paintable
- Can be used on all porous surfaces such as brick, concrete, wood etc.
- Very easy to apply and clean
- Water-proof after curing
- No odour
- Conforms to the requirements of VOC content specifications in LEED credit EQc4.1 "Low-emitting products" of SCAQMD rule 1168.
- Conforms to French A+ indoor air quality requirement.

APPLICATION

- Sealing of low movement joints between various construction materials (wood, concrete, brick etc.)
- Filling cracks in walls and on ceilings.
- Sealing joints between windows, walls, doors etc.



EUROFIX



PU FOAMS



PU Adhesive Foam

PROPERTIES

- Powerful adhesion of polystyrene heat panels (XPS and EPS).
- Instant adhesion and wall plugging within two hours.
- More economical. Ready to use in aerosol can.
- Up to 14 m2 heat insulation panel adhesion for each can.
- Minimum expansion during drying period.
- After dried, no further expansion and shrinkage.
- A lighter material compared to plaster, alternative material, used in heat insulation systems.
- No more extra burden or weight to building.
- High yield up to 55 liters, depending on the humidity and temperature.
- Fire Class: F (According to EN 13501-1. It refers to B3 for DIN 4102)
- Usable at low temperature like 0 °C
- It does not contain any propellant gases which are harmful to the ozone layer.

APPLICATION

- Best for mounting heat insulation panels and filling voids during adhesive application.
- Advised for wooden type construction materials adhesion to concrete, metal etc.
- Applications needed minimum expansion.
- Mounting and isolation for frames of windows and doors.



Professional PU Foam

PROPERTIES

- Excellent adhesion & filling capacity and high thermal & acoustical insulation value.
- Economical consumption thanks to precise application.
- High yield up to 45 liters depending on temperature and humidity.
- Conforms to fire class B3 according to DIN 4102-1.
- Mould-proof, water-proof and over paintable.
- The French VOC requirements for class A+
- The requirements of VOC content specifications in LEED credit EQc4.1 "Low-emitting products" of SCAQMD rule 1168.

APPLICATION

- Fixing and insulating of door and window frames.
- Filling and sealing of gaps, joints and cavities.
- Filling of penetrations in walls.
- Insulating electrical outlets and water pipes.





Mega Professional Winter PU Foam



PROPERTIES

- High yield up to 70 liters, depending on the humidity and temperature.
- Usable at temperatures below to -15°C
- Excellent adhesion on common construction materials.
- Economical consumption thanks to precise application.
- Conforms to fire class B3 according to DIN 4102-1.
- Mould-proof, water-proof and over paintable.
- It does not contain any propellant gases which are harmful to the ozone layer.

APPLICATION

- Fixing and insulating of door and window frames.
- Filling and sealing of gaps, joints and cavities.
- Filling of penetrations in walls.
- Insulating electrical outlets and water pipes.



Safety Valve Reusable Pu Foam

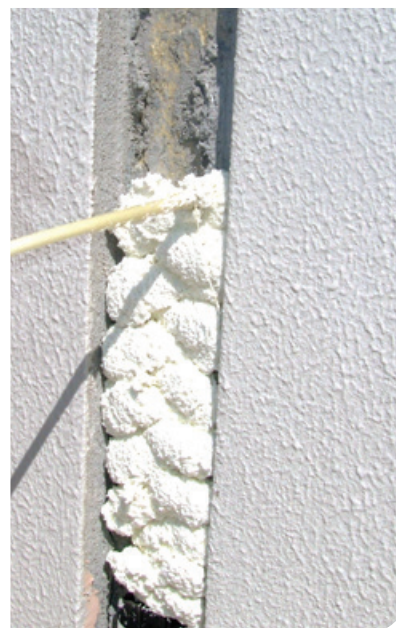


PROPERTIES

- Reusability: Can be re-used repeatedly even if partially used before.
- Even stored in horizontal or upside-down position the valve is never blocked.
- Better control of the outflow thanks to special adaptor.
- High horizontal yield thanks to special design tube.
- Mould-proof, water-proof and over paintable.
- It does not contain any propellant gases which are harmful to the ozone layer.

APPLICATION

- Fixing and insulating of door and window frames.
- Filling and sealing of gaps, joints and cavities.
- Filling of penetrations in walls.
- Insulating electrical outlets and water pipes.



Fire Rated Professional PU Foam

PROPERTIES

- Rated B2 according to DIN 4102.
- Excellent adhesion to most building materials.
- It does not contain any propellant gases that are harmful to the ozone layer.
- It can be painted after curing.
- It can be cut and sawn.

APPLICATION

- Fixing and insulating of door and window frames.
- Filling and sealing of gaps, joints and cavities.
- Filling of penetrations in walls.
- Insulating electrical outlets and water pipes.



Fire Rated PU Foam

PROPERTIES

- Rated B2 according to DIN 4102.
- Excellent adhesion to most building materials.
- It does not contain any propellant gases that are harmful to the ozone layer.
- It can be painted after curing.
- It can be cut and sawn.

APPLICATION

- Fixing and insulating of door and window frames.
- Filling and sealing of gaps, joints and cavities.
- Filling of penetrations in walls.
- Insulating electrical outlets and water pipes.





Mega PU Foam 70L



PROPERTIES

- High yield up to 70 liters, depending on the humidity and temperature.
- Excellent adhesion on common construction materials.
- Economical consumption thanks to precise application.
- Conforms to fire class B3 according to DIN 4102-1.
- Mould-proof, water-proof and over paintable.
- It does not contain any propellant gases which are harmful to the ozone layer.

APPLICATION

- Fixing and insulating of door and window frames.
- Filling and sealing of gaps, joints and cavities.
- Filling of penetrations in walls.
- Insulating electrical outlets and water pipes.



Mega PU Foam 65L



PROPERTIES

- High yield up to 65 liters, depending on the humidity and temperature.
- Excellent adhesion on common construction materials.
- Economical consumption thanks to precise application.
- Conforms to fire class B3 according to DIN 4102-1.
- Mould-proof, water-proof and over paintable.
- It does not contain any propellant gases which are harmful to the ozone layer.

APPLICATION

- Fixing and insulating of door and window frames.
- Filling and sealing of gaps, joints and cavities.
- Filling of penetrations in walls.
- Insulating electrical outlets and water pipes.





Polyurethane Foam

PROPERTIES

- Excellent adhesion & filling capacity and high thermal & acoustical insulation value.
- Excellent mounting capacity and stability.
- Adheres to almost all building materials with the exception of surfaces such as polyethylene, Teflon, silicone and surfaces contaminated with oils and greases, mold release agents and similar materials.
- Mould-proof, water-proof, over paintable.
- Cured foam dries rigid and can be trimmed, shaped and sanded.
- The French VOC requirements for class A+
- The requirements of VOC content specifications in LEED credit EQc4.1 "Low-emitting products" of SCAQMD rule 1168.

APPLICATION

- Fixing and insulating of door and window frames.
- Filling and sealing gaps, joints and cavities.
- Filling of penetrations in walls.
- Insulating electrical outlets and water pipes.





AEROSOLS

Foam Cleaner

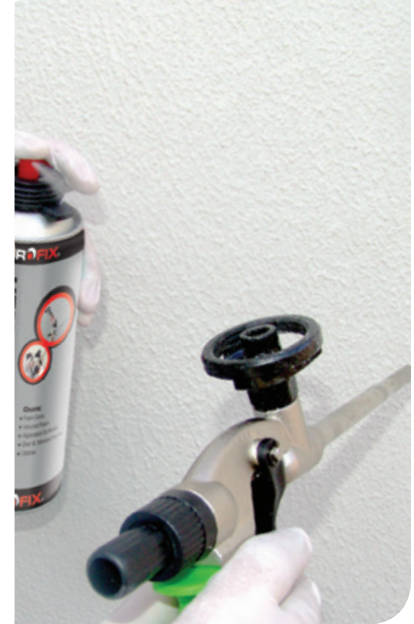


PROPERTIES

- Powerful solvent based aerosol cleaner for removing uncured PU foam (straw and gun adapter foam)
- Designed especially for cleaning the gun adapter of foam.
- Cleaner has a spray activator for removing the foam from the gun adapter.
- It can be used in all positions.
- Propellant gas is not harmful to the ozone layer.

APPLICATION

- Cleaning of the gun adapter
- Cleaning of the valves of the PU Foam Aerosol
- Removal of uncured foam



Long-Term Anti-Rust

PROPERTIES

- Ultimate penetrating ability
- Loosens rusted or corroded bolts, nuts, cables and any other fasteners.
- Greases and loosens door and window hinges, locks, and other fittings.
- Decreases frictions and stops squeaks of pedals, chairs, windows, faucets and hinges.
- Does not contain silicon and any dirty trap additives.
- Penetrates into humidity, drives it out of surface and dries it fast, thus provides longtime lubricating effect.
- Protects metal parts against rust.
- Provides maintenance by penetrating into surface and protects it against dirt.
- Dissolves tar, gum, adhesive etc.
- Permeates into grease and dirt and creates a protective film layer on the surface.

APPLICATION

- In all fittings; door and window mechanisms, locks, handles, hinges.
- For annulling humidity on metallic surfaces of bikes, motorbikes, small motor vehicles, electronic contacts and other home tools such as drills, jigsaws, etc.
- For loosening and activating rusted and jammed mechanisms.
- Can be used as protective on surfaces vulnerable to water and rust.
- For dissolving adhesive materials like tar, gum, adhesive tapes etc.
- Can be used for cleaning and maintenance of weapons.



**NEW
DESIGN**

EUROFIX PRODUCTS PACKAGE DESIGN IS **RENEWED WITH** **NEW MODERN CONCEPT.**

NEW DESIGN



ADHESIVE & GLUES – SEALANTS – PU FOAMS – AEROSOLS

Perfect Choice For Tough Jobs!



EN 15651-1 / EN 15651-2
EN 15651-3 / EN 15651-4



Perfect Choice For Tough Jobs!

KTL_326_Eurofix_EN_04.10.2022_REV00

ADHESIVES



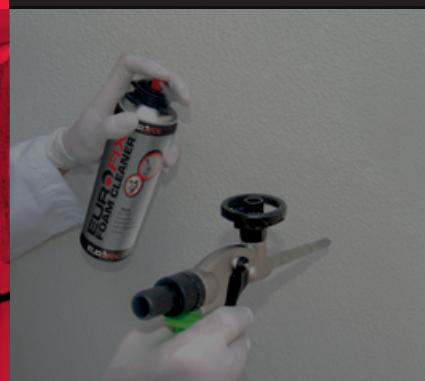
SEALANTS



PU FOAMS



AEROSOLS



www.eurofix.com.tr



/eurofixsealants